



**St Mary's Church of England
Junior Academy**

**SEND
Frequently Asked
Questions**

**Parent/Carer Guide
2025-26**



How will I know if my child has SEND?

Your child's class teacher or the school's SENDCo will talk to you if they have concerns about your child and you will be part of any discussions in identifying SEND. You will be informed in writing if your child is placed on the SEND Support Record or removed from it.

What is SEND?

If a child has a SEND it means they have a learning difficulty or disability which calls for special educational provision to be made for them, above that normally available to pupils of the same age.

What is the difference between SEN and SEND?

SEND encompasses special educational needs and disabilities. Children with SEN do not necessarily have a disability. Some disabled children do not have special educational needs, however there is a lot of overlap between the two groups.

Does having SEND mean a child is low-ability?

Absolutely not!! Children have many different strengths and areas of difficulty. SEND Support covers a broad range of needs and pupils of all attainment levels can be identified as having SEND.

Will a child always have SEND?

Not necessarily – hopefully with targeted support and the right interventions, children will learn to overcome their difficulties and barriers to learning can be removed. However, there are no 'quick fixes' and this may take several years. There are many great role models of highly successful adults who have SEND including: Greta Thunberg, Daniel Radcliffe, Richard Branson, Jamie Oliver and Keira Knightley to name just a few.

Are children with SEND taught out of class?

No - Children with SEND are taught in the classroom alongside their peers. The class teacher will use high quality teaching strategies to ensure that all children can access learning. Sometimes children may work away from the classroom, individually or as part of a small group, for short periods with an adult, to receive targeted tuition and support.

Does the school get extra funding for pupils with SEND? Does a school get more funding if they identify more pupils with SEND?

Schools are delegated some money to provide support for all pupils with SEND, this is called Element 2 funding. However, this is not calculated on the number of pupils with SEND. The proxy indicators

used are: Pupil numbers, prior attainment, social deprivation and a fixed sum per school. Schools can apply to the LA for Element 3 top-up funding for specific pupils, to help meet the needs of those with a very high level of need or under exceptional circumstances, where their provision costs exceed £6,000 and there is clear supporting evidence of need. For more information see:

www.norfolk.gov.uk/children-and-families/send-local-offer/education-and-learning/schools/sen-funding-for-schools

Am I entitled to funding if my child has SEND?

You may be entitled to claim Disability Living Allowance (DLA) if your child is disabled and eligible. For more information see www.gov.uk/disability-living-allowance-children. If your child has an EHCP you may be able to apply for a Personal Budget to request use of existing resources differently but it should be noted that there is no additional funding for this and it may impact on any support that is currently being provided. For more information see: <https://www.norfolk.gov.uk/article/40699/EHC-plan-personal-budgets>

Can a school refuse to accept a child with SEND?

School admissions are covered by the Equality Act. Going through the normal admissions system, a school cannot refuse to take a child because they have a disability or SEN, if they would otherwise have qualified for a place under the general admission criteria. However, it is always useful to talk to a school about how they feel they can or cannot meet a child's SEND before making your decisions about the best school for them. With more complex SEND, the school may also need time to prepare reasonable adjustments such as training for staff and purchasing specialist equipment.

What is a SRB?

SRB stands for Specialist Resource Base. These are usually small classes attached to a school, offering long-term (ASD and Deaf bases) and short-term (C&L, SEMH and SLCN) specialist school placements and outreach support at the mainstream school. For more information see: www.norfolk.gov.uk/children-and-families/send-local-offer/education-and-training-0-25/schools/specialist-education/specialist-resource-bases-srbs

Does my child need an EHCP?

An Education, Health and Care Plan (EHCP) is only necessary for children with very complex SEND, who have not made progress despite a high level of SEND Support and may need to consider a more specialist school placement / provision in the long-term. If requested, the Local Authority will decide if it is appropriate to carry out a EHC needs assessment to identify the provision needed across education, health and social care. For more information see: <https://www.norfolk.gov.uk/article/40684/EHC-needs-assessment-and-plans>

Does having an EHCP mean my child will get 1:1 adult support?

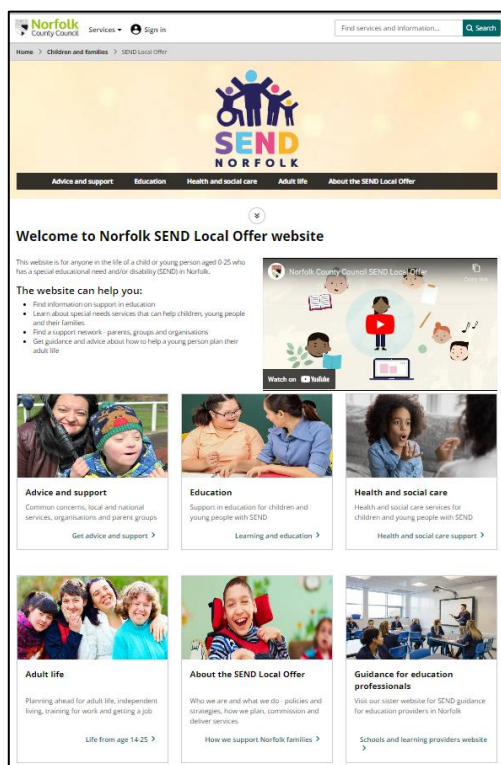
No - It is unlikely that an EHCP will state 1:1 support, as research has shown it is not beneficial for children to become dependent on 1:1 support and can hinder progress in the long term.

Does having an EHCP mean my child will be entitled to a place at a Complex Needs School?

No – The majority of children with EHCPs attend mainstream schools. In Norfolk, complex needs school places are highly sought after and there can be lengthy waiting lists even if a complex needs setting is identified as appropriate. With the right level of top-up funding and support, pupils can flourish and experience success in the right mainstream school, however an ECH needs assessment and regular annual reviews will be able to help identify the best school placement for them.

Where can I find out more information about SEND and support available locally?

Norfolk's Local Offer website has a wealth of information useful to anyone in the life of a child or young person aged 0-25 who has SEND in Norfolk: www.norfolk.gov.uk/children-and-families/send-local-offer



Free, impartial advice can also be given by the Norfolk SEND Information, Advice and Support Service (SENDIASS): www.norfolksendiass.org.uk/



Just One Norfolk have a wonderful website and advice line to offer a range of service to support you and your family: www.justonenorfolk.nhs.uk/

