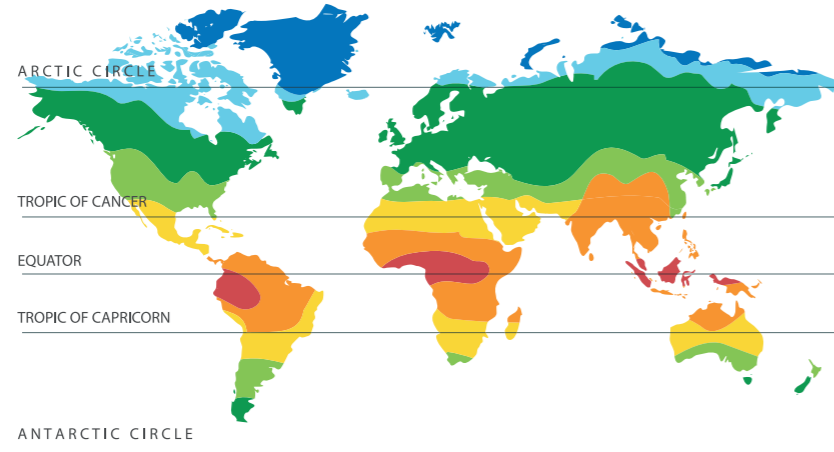


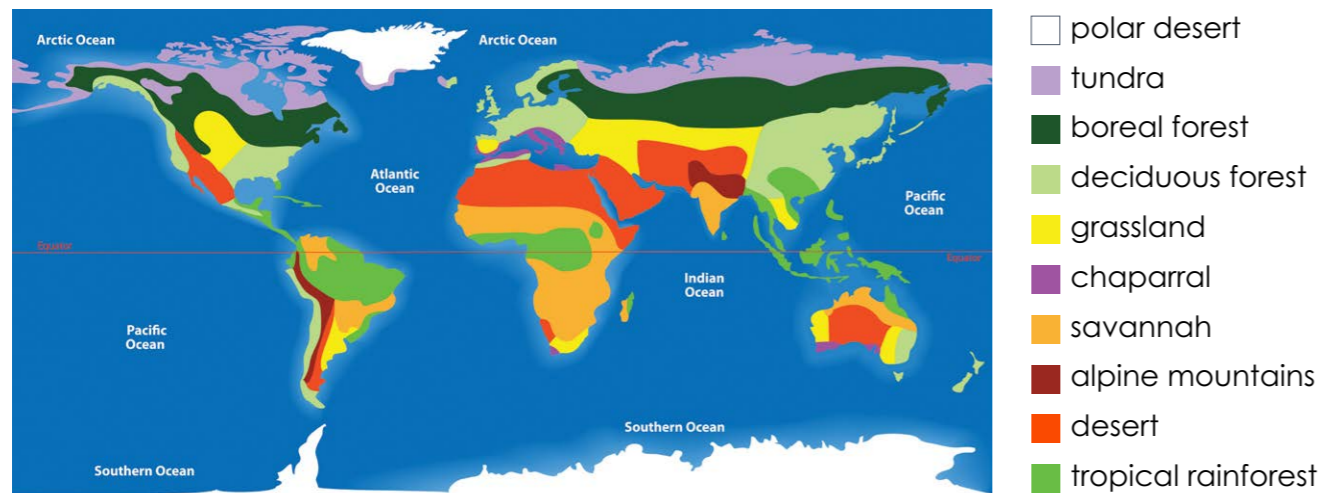


What are the different climate zones of the world?



<b>polar</b>	very cold summers, extremely cold winters, little rainfall
<b>subpolar</b>	short cool summers, long cold winters, little rainfall
<b>temperate</b>	four seasons, changing temperatures, can rain any time of year
<b>Mediterranean</b>	dry, warm summers, cool, wet winters, some rainfall
<b>arid</b>	temperatures very high all year, almost no rain at all
<b>tropical</b>	a rainy summer season and a very hot and very dry winter season
<b>equatorial</b>	hot and humid with heavy rainfall throughout the year

Where are the different biomes of the world?



Significant Places

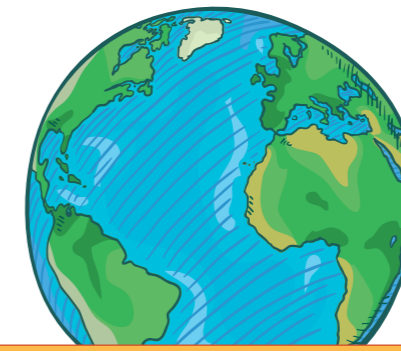


Tundra

Boreal Forest

Deciduous Forest

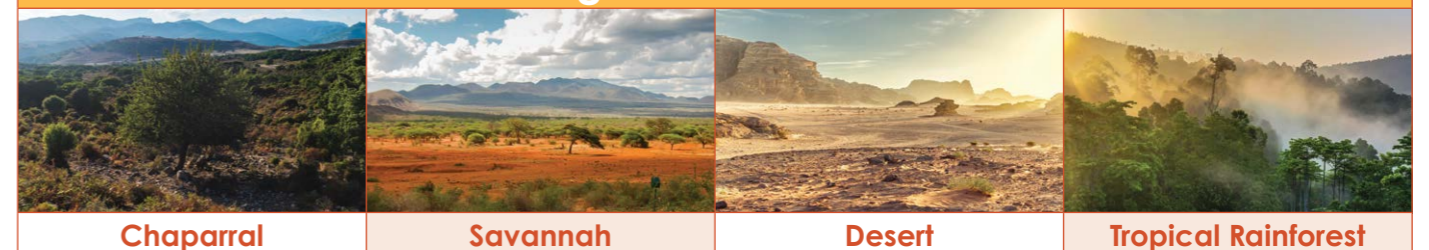
Grassland



Glossary

1	<b>adaptation</b>	when something changes to better suit the environment
2	<b>biome</b>	a large area with a certain type of plants and animals
3	<b>camouflage</b>	when something blends into the surroundings
4	<b>climate</b>	the pattern of rainfall and temperature in a certain place
5	<b>climate zone</b>	a large area with a certain type of climate
6	<b>deforestation</b>	when large areas of trees are cut down or destroyed
7	<b>drought</b>	when there is not enough water because there was not enough rainfall
8	<b>fauna</b>	another word for 'animals'
9	<b>flooding</b>	when there is too much water and it covers the land
10	<b>flora</b>	another word for 'plants'
11	<b>food</b>	something that plants absorb and animals eat
12	<b>hibernate</b>	when an animal spends the colder months being much less active
13	<b>migrate</b>	when an animal moves from one place to another over a large distance
14	<b>predator</b>	an animal which hunts other animals
15	<b>prey</b>	an animal which is hunted by other animals
16	<b>rainfall</b>	how much rain falls and how often
17	<b>resources</b>	things that can be used for different reasons e.g. wood as a building material
18	<b>shelter</b>	somewhere that gives protection from bad weather or danger
19	<b>survive</b>	when a living thing continues to be alive
20	<b>temperature</b>	how hot or cold something or somewhere is

Significant Places



Chaparral

Savannah

Desert

Tropical Rainforest